

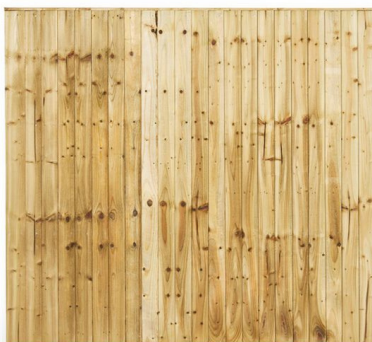
FENCE PANELS



OVERLAP PANEL

Pressure Treated Green or Brown

Width	Height	Price
*6' x 6'		£26.35
*6' x 5'		£23.10
*6' x 4'		£20.70
*6' x 3'		£17.65
6' x 2'		£14.85



CLOSEBOARD PANEL

Pressure Treated Green or Brown

Width	Height	Fully/Framed	STD
*6' x 6'		£43.80	£40.40
*6' x 5'		£37.55	£34.65
*6' x 4'		£32.95	£30.15
*6' x 3'		£28.80	£25.70
6' x 2'		£23.20	£20.60



CONCAVE/CONVEX CLOSEBOARD

Pressure Treated Green or Brown

Width	Height	Fully/Framed	STD
6' x 6'		£49.30	£45.90
6' x 5'		£43.05	£40.15
6' x 4'		£38.45	£35.65
6' x 3'		£34.30	£31.20
6' x 2'		£28.70	£26.10



GROOVY LITE ACOUSTIC PANEL

Pressure Treated Green

Width	Height	Price
1.829m x 2.0m		£127.75
1.829m x 1.8m		£113.85
1.829m x 1.5m		£108.80
1.829m x 1.2m		£96.85
1.829m x 0.9m		£80.00



OMEGA LATTICE TOP PANEL

Pressure Treated Green

Width	Height	Code	Price
*1.8m x 1.8m		OLT180	£68.88
*1.8m x 1.5m		OLT150	£63.85
*1.8m x 1.2m		OLT120	£56.02
*1.8m x 0.9m		OLT90	£52.61
1.6m x 0.9m		Wing	£54.59



'V' ARCHED PANEL

Pressure Treated Green

Width	Height	Code	Price
*1.8m x 1.8m		VA180	£68.88
*1.8m x 1.5m		VAT150	£64.64
*1.8m x 1.2m		VAT120	£56.85



ARCHED HORIZONTAL PANEL

Pressure Treated Green

Width	Height	Code	Price
*1.8m x 1.8m		AH180	£58.62



SQUARE HORIZONTAL PANEL

Pressure Treated Green

Width	Height	Code	Price
*1.8m x 1.8m		SH180	£55.54
*1.8m x 1.5m		SH150	£49.96
*1.8m x 1.2m		SH120	£41.02
*1.8m x 0.9m		SH90	£35.42



HORIZONTAL LATTICE TOP PANEL

Pressure Treated Green

Width	Height	Code	Price
*1.8m x 1.8m		HLT180	£61.83
*1.8m x 1.5m		HLT150	£54.89
*1.8m x 1.2m		HLT120	£46.78

* STOCKED AT SHREWSBURY BRANCH



ARCHED LATTICE TOP PANELS

Pressure Treated Green

Width	Height	Code	Price
*1.8m x	1.8m	ALT180	£68.88



ELITE SLATTED TOP PANEL

Pressure Treated Green

Width	Height	Code	Price
1.8m x	1.8m	EST180	£80.49



DOUBLE SLATTED PANEL

Pressure Treated Green

Width	Height	Code	Price
*1.8m x	1.8m	SDS180	£120.90



PREMIUM WOVEN PANEL

Pressure Treated Green

Width	Height	Code	Price
*1.8m x	1.8m	PW180	£68.10
*1.8m x	1.5m	PW150	£59.01
*1.8m x	1.2m	PW120	£49.57



SLATTED PANEL

Pressure Treated Green

Width	Height	Code	Price
*1.8m x	1.8m	SLA180	£72.04
*1.8m x	1.5m	SLA150	£63.65
*1.8m x	1.2m	SLA120	£54.39
*1.8m x	0.9m	SLA90	£49.39
1.8m x	0.3m	SLA30	£23.68



VENETAIN PANEL

Pressure Treated Green

Width	Height	Code	Price
1.8m x	1.8m	VP180	£126.61
0.9m x	1.8m	VP90	£68.61



HAZEL HURDLE PANEL

Pressure Treated Green

Width	Height	Code	Price
*1.8m x	1.8m	HH180	£65.77
*1.8m x	1.5m	HH150	£57.82
*1.8m x	1.2m	HH120	£46.88
*1.8m x	0.9m	HH90	£37.09



TONGUE & GROOVE LATTICE TOP PANEL

Pressure Treated Green

Width	Height	Code	Price
1.8m x	1.8m	TGLT180	£104.93
1.8m x	1.5m	TGLT150	£89.24
1.8m x	1.2m	TGLT120	£70.42



TONGUE & GROOVE FLAT TOP PANEL

Pressure Treated Green

Width	Height	Code	Price
1.8m x	1.8m	TGF180	£88.94
1.8m x	1.5m	TGF150	£81.51

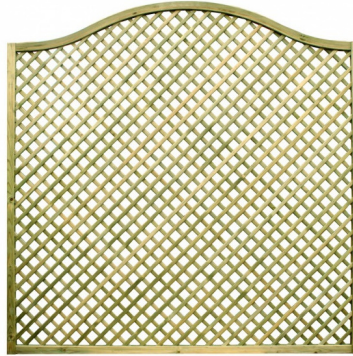
* STOCKED AT SHREWSBURY BRANCH



**TONGUE & GROOVE ARCH
TOP PANEL**

Pressure Treated Green

Width	Height	Code	Price
1.8m x	1.8m	TGA180	£101.27



OMEGA LATTICE PANEL

Pressure Treated Green

Width	Height	Code	Price
*1.8m x	1.8m	OL180	£59.15

PAILING PANELS



SAWN PALING PANEL

Pressure Treated Green or Brown

Available Round Top or Pointed

Width	Height	Price
6' x	5'	£31.85
*6' x	4'	£28.40
*6' x	3'	£22.95



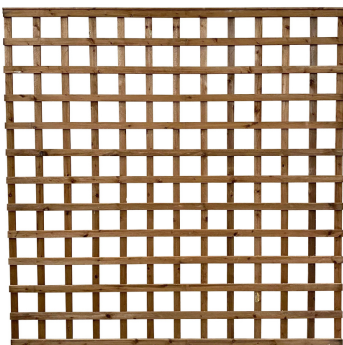
PAR SMOOTH PALING PANEL

Pressure Treated Green or Brown

Available Round Top or Pointed

Width	Height	Price
6' x	5'	£54.10
6' x	4'	£41.00
6' x	3'	£31.90

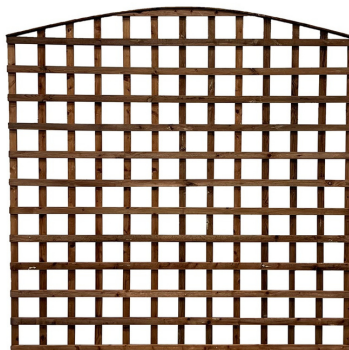
SQUARE TRELLIS PANELS



**SAWN SQUARE TRELLIS
PANELS**

Pressure Treated Green or Brown

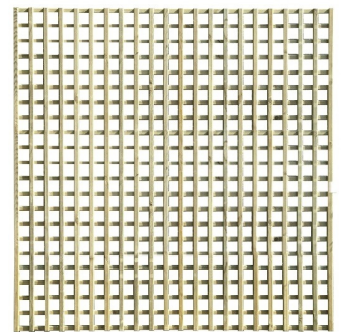
Width	Height	Code	Price
*6' x	6'	PT6	£24.45
*6' x	5'	PT5	£21.40
*6' x	4'	PT4	£18.10
*6' x	3'	PT3	£15.05
*6' x	2'	PT2	£12.80
*6' x	1'	PT1	£10.30



**CONCAVE/CONVEX SAWN
SQUARE TRELLIS PANELS**

Pressure Treated Green or Brown

Width	Height	Code	Price
6' x	6'	PTC66	£38.90
6' x	5'	PTC65	£32.30
6' x	4'	PTC64	£29.00
6' x	3'	PTC63	£25.50
6' x	2'	PTC62	£23.20
6' x	1'	PTC61	£20.85



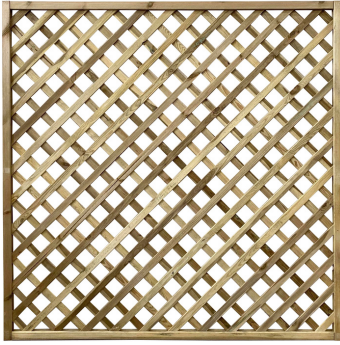
**SQUARE TRELLIS PANELS
SMOOTH PAR**

Pressure Treated Green

Width	Height	Code	Price
1.83m x	1.8m	ST13	£39.72
1.83m x	1.5m	ST12	£32.39
1.83m x	1.2m	ST11	£26.52
1.83m x	0.9m	ST10	£21.25
1.83m x	0.6m	ST9	£21.25
1.83m x	0.45m	ST8	£11.20
1.83m x	0.3m	ST7	£7.47

*** STOCKED AT SHREWSBURY BRANCH**

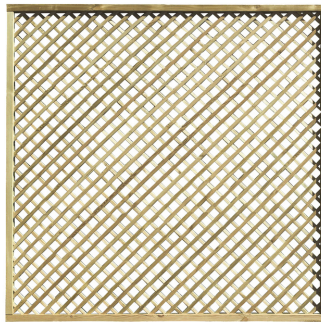
DIAMOND TRELLIS PANELS



HEAVY DIAMOND TRELLIS PANELS

Pressure Treated Green

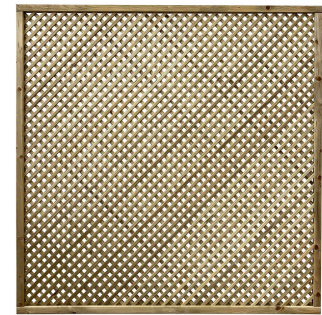
Width	Height	Code	Price
*1.8m x 1.8m	HDL13	£58.23	
*1.8m x 1.5m	HDL12	£48.69	
*1.8m x 1.2m	HDL11	£40.64	
*1.8m x 0.9m	HDL10	£32.45	
*1.8m x 0.6m	HDL9	£25.15	
*1.8m x 0.3m	HDL7-IMP	£15.85	
*1.8m x 0.3m	HDL7	£15.85	



DIAMOND TRELLIS PANEL

Pressure Treated Green

Width	Height	Code	Price
*1.83m x 1.8m	DT13	£61.52	
*1.83m x 1.5m	DT12	£47.00	
*1.83m x 1.2m	DT11	£34.29	
*1.83m x 0.9m	DT10	£25.48	
*1.83m x 0.6m	DT9	£20.28	
*1.83m x 0.45m	DT8	£15.94	
*1.83m x 0.3m	DT7	£13.50	
2.9m x 0.6m	DT17	£42.30	
2.9m x 0.3m	DT16	£29.70	



PRIVACY TRELLIS PANELS

Pressure Treated Green

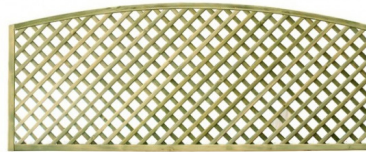
Width	Height	Code	Price
1.83m x 1.8m	PL13	£69.62	
1.83m x 0.6m	PL9	£26.61	



HEAVY DIAMOND TRELLIS CONVEX PANEL

Pressure Treated Green

Width	Height	Code	Price
*1.8m x 0.3m	HDL1	£26.40	
*1.83m x 0.3m	HDL1-IMP	£26.40	



DIAMOND TRELLIS CONVEX/ CONCAVE PANEL

Pressure Treated Green

Width	Height	Code	Price
*1.83m x 0.3m	DT1 Convex	£17.86	
*1.83m x 0.27m	DT2 Concave	£17.42	
*1.83m x 0.45m	DT3 Convex	£20.72	
*1.83m x 0.6m	DT5 Convex	£23.26	
1.83m x 1.57m	DT15 Concave	£48.75	
*1.83m x 1.6m	DT14 Convex	£65.59	
0.45m x 0.45m	DT20 Corner	£11.26	

POST CAPS



Post Cap	Price
*For 3" Post	£1.30
*For 4" Post	£1.64



Temple	Price
*For 3" Post	£4.50
*For 4" Post	£6.20



Ball & Collar	Price
*3"	£4.90
*4"	£9.50



Acorn	Price
*3"	£5.32
*4"	£9.82

WOODEN POSTS

Pressure Treated Green or Brown

Length (m)	Width (mm)	Width (mm)	1 to 19	20 +
*1.5m	75	75	£4.22	£4.09
*1.8m	75	75	£5.06	£4.91
*2.1m	75	75	£5.91	£5.73
*2.4m	75	75	£6.75	£6.55
2.7m	75	75	£8.44	£8.18
*1.5m	100	100	£7.50	£7.28
*1.8m	100	100	£9.00	£8.73
*2.1m	100	100	£10.50	£10.19
*2.4m	100	100	£12.00	£11.64
*3.0m	100	100	£15.00	£14.55



*WOODEN GRAVEL BOARD 6' 6" X 2" £6.45

DECORATIVE PINE POSTS

Length (m)	Width (mm)	Width (mm)	Code	Price
Smooth Planed W4W Top Posts				
*1.35m	90	90	SP100-1.35	£10.71
*1.8m	90	90	SP100-1.8	£14.22
*2.4m	90	90	SP100-2.4	£18.95
Planed & Ribbed W4W Top Posts				
1.8m	90	90	P100-1.8	£14.22
2.4m	90	90	P100-2.4	£18.95
2.7m	90	90	P100-2.7	£21.28
2.4m	70	70	P75-2.4	£11.58
Planed & Ribbed H Posts				
*2.4	90	90	H100-2.4	£19.28

* STOCKED AT SHREWSBURY BRANCH

CONCRETE POSTS



CONCRETE POSTS - INTERS

Length	Price
*10'	£27.00
*9'	£16.75
*8'	£14.95
*7'	£13.95
*6'	£13.20
*5'	£12.00

CONCRETE POSTS - CORNER

Length	Price
10'	£39.00
*9'	£26.05
*8'	£23.50
7'	£21.85
6'	£19.90
5'	£17.25

CONCRETE POSTS - END

Length	Price
10'	£39.00
*9'	£26.05
*8'	£23.50
7'	£21.85
6'	£19.90
5'	£17.25



CONCRETE POSTS - 3 WAY

Length	Price
*9'	£26.05
*8'	£23.50
7'	£21.85
6'	£19.90
5'	£17.25

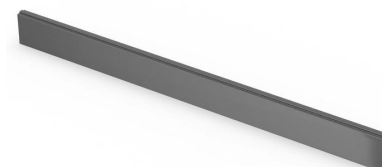
GRAVEL BOARDS - PLAIN

FACE		
Length	Width	Price
*6'	12" x 2"	£13.00
*6'	6" x 2"	£11.35

GRAVEL BOARDS - ROCK

FACE		
Length	Width	Price
*6'	12" x 2"	£13.60
*6'	6" x 2"	£12.45

DURAPOST



**STEEL POSTS (GALV)
DURAPOST CLASSIC INTERS**

Length	Price
10'	£27.69
8'	£20.49
6'	£15.33

**STEEL POSTS (PAINTED)
DURAPOST CLASSIC INTERS**

Length	Price
10'	£41.07
8'	£30.78
6'	£23.16

**GRAVEL BOARD
DURAPOST COMPOSITE**

Length	Width	Price
6'	6" x 2"	£18.44

* STOCKED AT SHREWSBURY BRANCH