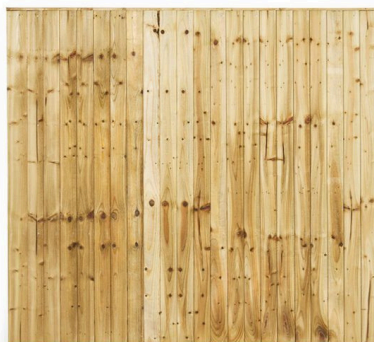


**FENCE PANELS****OVERLAP PANEL***Pressure Treated Green or Brown*

Width	Height	Price
*6' x 6'		<b>£26.35</b>
*6' x 5'		<b>£23.10</b>
*6' x 4'		<b>£20.70</b>
*6' x 3'		<b>£17.65</b>
*6' x 2'		<b>£14.85</b>

**CLOSEBOARD PANEL***Pressure Treated Green or Brown*

Width	Height	Fully/Framed	STD
6' x 6'		<b>^£43.80</b>	<b>*£40.40</b>
6' x 5'		<b>^£37.55</b>	<b>*£34.65</b>
6' x 4'		<b>^£32.95</b>	<b>*£30.15</b>
6' x 3'		<b>^£28.80</b>	<b>*£25.70</b>
6' x 2'		<b>^£23.20</b>	<b>£20.60</b>

**CONCAVE/CONVEX CLOSEBOARD***Pressure Treated Green or Brown*

Width	Height	Fully/Framed	STD
6' x 6'		<b>^£49.30</b>	<b>^£45.90</b>
6' x 5'		<b>^£43.05</b>	<b>^£40.15</b>
6' x 4'		<b>^£38.45</b>	<b>^£35.65</b>
6' x 3'		<b>^£34.30</b>	<b>^£31.20</b>
6' x 2'		<b>^£28.70</b>	<b>^£26.10</b>

**GROOVY LITE ACOUSTIC PANEL***Pressure Treated Green*

Width	Height	Price
1.829m x 2.0m		<b>£127.75</b>
1.829m x 1.8m		<b>£113.85</b>
1.829m x 1.5m		<b>£108.80</b>
1.829m x 1.2m		<b>£96.85</b>
1.829m x 0.9m		<b>£80.00</b>

**OMEGA LATTICE TOP PANEL***Pressure Treated Green*

Width	Height	Code	Price
*1.8m x 1.8m		OLT180	<b>£68.88</b>
*1.8m x 1.5m		OLT150	<b>£63.85</b>
*1.8m x 1.2m		OLT120	<b>£56.02</b>
*1.8m x 0.9m		OLT90	<b>£52.61</b>
1.6m x 0.9m		Wing	<b>£54.59</b>

**'V' ARCHED PANEL***Pressure Treated Green*

Width	Height	Code	Price
*1.8m x 1.8m		VA180	<b>£68.88</b>
*1.8m x 1.5m		VAT150	<b>£64.64</b>
*1.8m x 1.2m		VAT120	<b>£56.85</b>

**ARCHED HORIZONTAL PANEL***Pressure Treated Green*

Width	Height	Code	Price
*1.8m x 1.8m		AH180	<b>£58.62</b>

**SQUARE HORIZONTAL PANEL***Pressure Treated Green*

Width	Height	Code	Price
*1.8m x 1.8m		SH180	<b>£55.54</b>
*1.8m x 1.5m		SH150	<b>£49.96</b>
*1.8m x 1.2m		SH120	<b>£41.02</b>
*1.8m x 0.9m		SH90	<b>£35.42</b>

**HORIZONTAL LATTICE TOP PANEL***Pressure Treated Green*

Width	Height	Code	Price
*1.8m x 1.8m		HLT180	<b>£61.83</b>
*1.8m x 1.5m		HLT150	<b>£54.89</b>
*1.8m x 1.2m		HLT120	<b>£46.78</b>

**\* STOCKED AT BOTH BRANCHES ^PRE-ORDER ONLY (UNMARKED STOCKED AT MARKET DRAYTON)**





### ARCHED LATTICE TOP PANELS

*Pressure Treated Green*

Width	Height	Code	Price
*1.8m x	1.8m	ALT180	<b>£68.88</b>



### ELITE SLATTED TOP PANEL

*Pressure Treated Green*

Width	Height	Code	Price
1.8m x	1.8m	EST180	<b>£80.49</b>



### DOUBLE SLATTED PANEL

*Pressure Treated Green*

Width	Height	Code	Price
*1.8m x	1.8m	SDS180	<b>£120.90</b>



### PREMIUM WOVEN PANEL

*Pressure Treated Green*

Width	Height	Code	Price
*1.8m x	1.8m	PW180	<b>£68.10</b>
*1.8m x	1.5m	PW150	<b>£59.01</b>
*1.8m x	1.2m	PW120	<b>£49.57</b>



### SLATTED PANEL

*Pressure Treated Green*

Width	Height	Code	Price
*1.8m x	1.8m	SLA180	<b>£72.04</b>
*1.8m x	1.5m	SLA150	<b>£63.65</b>
*1.8m x	1.2m	SLA120	<b>£54.39</b>
*1.8m x	0.9m	SLA90	<b>£49.39</b>
1.8m x	0.3m	SLA30	<b>£23.68</b>



### VENETAIN PANEL

*Pressure Treated Green*

Width	Height	Code	Price
1.8m x	1.8m	VP180	<b>£126.61</b>
0.9m x	1.8m	VP90	<b>£68.61</b>



### HAZEL HURDLE PANEL

*Pressure Treated Green*

Width	Height	Code	Price
*1.8m x	1.8m	HH180	<b>£65.77</b>
*1.8m x	1.5m	HH150	<b>£57.82</b>
*1.8m x	1.2m	HH120	<b>£46.88</b>
*1.8m x	0.9m	HH90	<b>£37.09</b>



### TONGUE & GROOVE LATTICE TOP PANEL

*Pressure Treated Green*

Width	Height	Code	Price
1.8m x	1.8m	TGLT180	<b>£104.93</b>
1.8m x	1.5m	TGLT150	<b>£89.24</b>
1.8m x	1.2m	TGLT120	<b>£70.42</b>



### TONGUE & GROOVE FLAT TOP PANEL

*Pressure Treated Green*

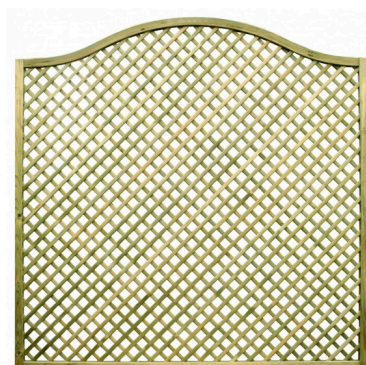
Width	Height	Code	Price
1.8m x	1.8m	TGF180	<b>£88.94</b>
1.8m x	1.5m	TGF150	<b>£81.51</b>



### TONGUE & GROOVE ARCH TOP PANEL

Pressure Treated Green

Width	Height	Code	Price
1.8m x	1.8m	TGA180	<b>£101.27</b>



### OMEGA LATTICE PANEL

Pressure Treated Green

Width	Height	Code	Price
*1.8m x	1.8m	OL180	<b>£59.15</b>

### PAILING PANELS



#### SAWN PALING PANEL

Pressure Treated Green or Brown

Available Round Top or Pointed

Width	Height	Price
^6' x	5'	<b>£31.85</b>
*6' x	4'	<b>£28.40</b>
*6' x	3'	<b>£22.95</b>



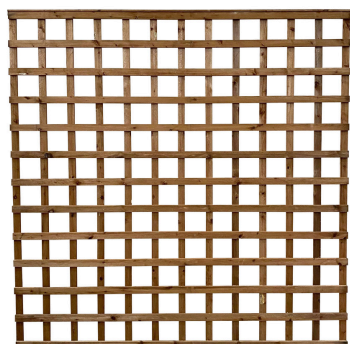
#### PAR SMOOTH PALING PANEL

Pressure Treated Green or Brown

Available Round Top or Pointed

Width	Height	Price
^6' x	5'	<b>£54.10</b>
^6' x	4'	<b>£41.00</b>
^6' x	3'	<b>£31.90</b>

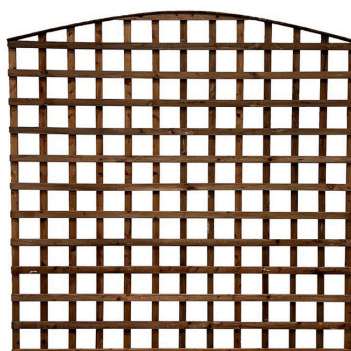
### SQUARE TRELLIS PANELS



#### SAWN SQUARE TRELLIS PANELS

Pressure Treated Green or Brown

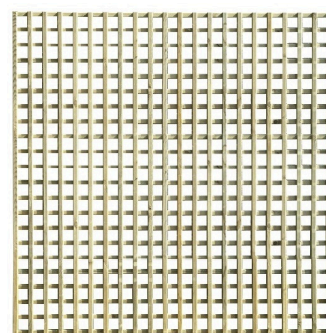
Width	Height	Code	Price
*6' x	6'	PT6	<b>£24.45</b>
*6' x	5'	PT5	<b>£21.40</b>
*6' x	4'	PT4	<b>£18.10</b>
*6' x	3'	PT3	<b>£15.05</b>
*6' x	2'	PT2	<b>£12.80</b>
*6' x	1'	PT1	<b>£10.30</b>



#### CONCAVE/CONVEX SAWN SQUARE TRELLIS PANELS

Pressure Treated Green or Brown

Width	Height	Code	Price
^6' x	6'	PTC66	<b>£38.90</b>
^6' x	5'	PTC65	<b>£32.30</b>
^6' x	4'	PTC64	<b>£29.00</b>
^6' x	3'	PTC63	<b>£25.50</b>
^6' x	2'	PTC62	<b>£23.20</b>
^6' x	1'	PTC61	<b>£20.85</b>



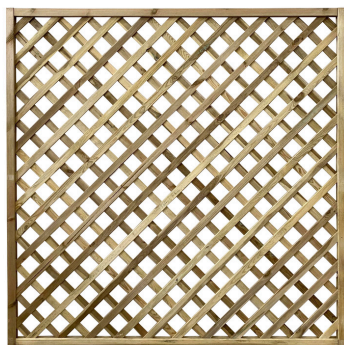
#### SQUARE TRELLIS PANELS SMOOTH PAR

Pressure Treated Green

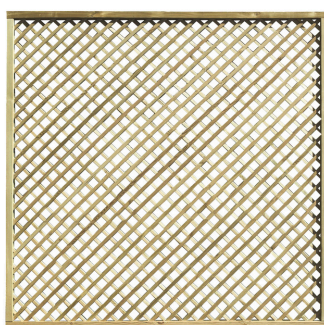
Width	Height	Code	Price
1.83m x	1.8m	ST13	<b>£39.72</b>
1.83m x	1.5m	ST12	<b>£28.60</b>
1.83m x	1.2m	ST11	<b>£26.52</b>
1.83m x	0.9m	ST10	<b>£21.25</b>
1.83m x	0.6m	ST9	<b>£13.00</b>
1.83m x	0.45m	ST8	<b>£11.04</b>
1.83m x	0.3m	ST7	<b>£7.47</b>

\* STOCKED AT BOTH BRANCHES ^PRE-ORDER ONLY (UNMARKED STOCKED AT MARKET DRAYTON)

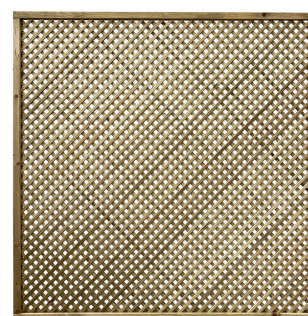


**DIAMOND TRELLIS PANELS****hales** NOISESTOP  
RETAIL | SAWMILLS**HEAVY DIAMOND TRELLIS PANELS***Pressure Treated Green*

Width	Height	Code	Price
*1.8m x	1.8m	HDL13	<b>£58.23</b>
*1.8m x	1.5m	HDL12	<b>£48.69</b>
*1.8m x	1.2m	HDL11	<b>£40.64</b>
*1.8m x	0.9m	HDL10	<b>£32.45</b>
*1.8m x	0.6m	HDL9	<b>£25.15</b>
*1.8m x	0.3m	HDL7-IMP	<b>£15.85</b>
*1.8m x	0.3m	HDL7	<b>£15.85</b>

**DIAMOND TRELLIS PANEL***Pressure Treated Green*

Width	Height	Code	Price
*1.83m x	1.8m	DT13	<b>£61.52</b>
*1.83m x	1.5m	DT12	<b>£47.00</b>
*1.83m x	1.2m	DT11	<b>£34.29</b>
*1.83m x	0.9m	DT10	<b>£25.48</b>
*1.83m x	0.6m	DT9	<b>£20.28</b>
*1.83m x	0.45m	DT8	<b>£15.94</b>
*1.83m x	0.3m	DT7	<b>£13.50</b>
2.9m x	0.6m	DT17	<b>£42.30</b>
2.9m x	0.3m	DT16	<b>£29.70</b>

**PRIVACY TRELLIS PANELS***Pressure Treated Green*

Width	Height	Code	Price
1.83m x	1.8m	PL13	<b>£69.62</b>
1.83m x	0.6m	PL9	<b>£26.61</b>

**HEAVY DIAMOND TRELLIS CONVEX PANEL***Pressure Treated Green*

Width	Height	Code	Price
*1.8m x	0.3m	HDL1	<b>£26.40</b>
*1.83m x	0.3m	HDL1-IMP	<b>£26.40</b>

**DIAMOND TRELLIS CONVEX/CONCAVE PANEL***Pressure Treated Green*

Width	Height	Code	Price
*1.83m x	0.3m	DT1 Convex	<b>£17.86</b>
*1.83m x	0.27m	DT2 Concave	<b>£17.42</b>
*1.83m x	0.45m	DT3 Convex	<b>£20.72</b>
*1.83m x	0.6m	DT5 Convex	<b>£23.26</b>
1.83m x	1.57m	DT15 Concave	<b>£48.75</b>
*1.83m x	1.6m	DT14 Convex	<b>£65.59</b>
0.45m x	0.45m	DT20 Corner	<b>£11.26</b>

**POST CAPS**

Post Cap	Price
*For 3" Post	<b>£1.30</b>
*For 4" Post	<b>£1.64</b>



Temple	Price
*For 3" Post	<b>£4.50</b>
*For 4" Post	<b>£6.20</b>



Ball & Collar	Price
*3"	<b>£4.90</b>
*4"	<b>£9.50</b>



Acorn	Price
*3"	<b>£5.32</b>
*4"	<b>£9.82</b>

**WOODEN POSTS***Pressure Treated Green or Brown*

Length (m)	Width (mm)	Width (mm)	1 to 19	20 +
*1.5m	75	75	<b>£4.22</b>	<b>£4.09</b>
*1.8m	75	75	<b>£5.06</b>	<b>£4.91</b>
*2.1m	75	75	<b>£5.91</b>	<b>£5.73</b>
*2.4m	75	75	<b>£6.75</b>	<b>£6.55</b>
2.7m	75	75	<b>£8.44</b>	<b>£8.18</b>
*1.5m	100	100	<b>£7.50</b>	<b>£7.28</b>
*1.8m	100	100	<b>£9.00</b>	<b>£8.73</b>
*2.1m	100	100	<b>£10.50</b>	<b>£10.19</b>
*2.4m	100	100	<b>£12.00</b>	<b>£11.64</b>
*3.0m	100	100	<b>£15.00</b>	<b>£14.55</b>

\*WOODEN GRAVEL BOARD 6' 6" X 2" £6.45

**DECORATIVE PINE POSTS**

Length (m)	Width (mm)	Width (mm)	Code	Price
<b>Smooth Planed W4W Top Posts</b>				
*1.35m	90	90	SP100-1.35	<b>£10.71</b>
*1.8m	90	90	SP100-1.8	<b>£14.22</b>
*2.4m	90	90	SP100-2.4	<b>£18.95</b>
<b>Planed &amp; Ribbed W4W Top Posts</b>				
1.8m	90	90	P100-1.8	<b>£14.22</b>
2.4m	90	90	P100-2.4	<b>£18.95</b>
2.7m	90	90	P100-2.7	<b>£21.28</b>
2.4m	70	70	P75-2.4	<b>£11.58</b>
<b>Planed &amp; Ribbed H Posts</b>				
*2.4	90	90	H100-2.4	<b>£19.28</b>



**CONCRETE POSTS****hales** NOISESTOP  
RETAIL | SAWMILLS**CONCRETE POSTS - INTERS**

Length	Price
*10'	<b>£27.00</b>
*9'	<b>£16.75</b>
*8'	<b>£14.95</b>
*7'	<b>£13.95</b>
*6'	<b>£13.20</b>
*5'	<b>£12.00</b>

**CONCRETE POSTS - CORNER**

Length	Price
10'	<b>£39.00</b>
*9'	<b>£26.05</b>
*8'	<b>£23.50</b>
7'	<b>£21.85</b>
6'	<b>£19.90</b>
5'	<b>£17.25</b>

**CONCRETE POSTS - END**

Length	Price
10'	<b>£39.00</b>
*9'	<b>£26.05</b>
*8'	<b>£23.50</b>
7'	<b>£21.85</b>
6'	<b>£19.90</b>
5'	<b>£17.25</b>

**CONCRETE POSTS - 3 WAY**

Length	Price
*9'	<b>£26.05</b>
*8'	<b>£23.50</b>
7'	<b>£21.85</b>
6'	<b>£19.90</b>
5'	<b>£17.25</b>

**GRAVEL BOARDS - PLAIN FACE**

Length	Width	Price
*6'	12" x 2"	<b>£13.00</b>
*6'	6" x 2"	<b>£11.35</b>

**GRAVEL BOARDS - ROCK FACE**

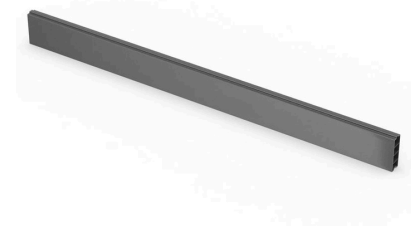
Length	Width	Price
*6'	12" x 2"	<b>£13.60</b>
*6'	6" x 2"	<b>£12.45</b>

**DURAPOST****STEEL POSTS (GALV)  
DURAPOST CLASSIC INTERS**

Length	Price
10'	<b>£27.69</b>
8'	<b>£20.49</b>
6'	<b>£15.33</b>

**STEEL POSTS (PAINTED)  
DURAPOST CLASSIC INTERS**

Length	Price
10'	<b>£41.07</b>
8'	<b>£30.78</b>
6'	<b>£23.16</b>

**GRAVEL BOARD  
DURAPOST COMPOSITE**

Length	Width	Price
6'	6" x 2"	<b>£18.44</b>

*\* STOCKED AT BOTH BRANCHES ^PRE-ORDER ONLY (UNMARKED STOCKED AT MARKET DRAYTON)*